



Warrnambool Art Gallery - Explore Learn Create from home Portraits!

What is a portrait?

It's an artwork that has been created about a person or animal. It usually tells us something about them and their character, the things they like or are good at. A portrait can be any type of artwork – a painting, drawing, photograph, sculpture or even a collage.

Warrnambool Art Gallery has lots of different types of portraits in the collection. We even hold a portrait competition each year for people to enter portraits of people they admire or look up to.

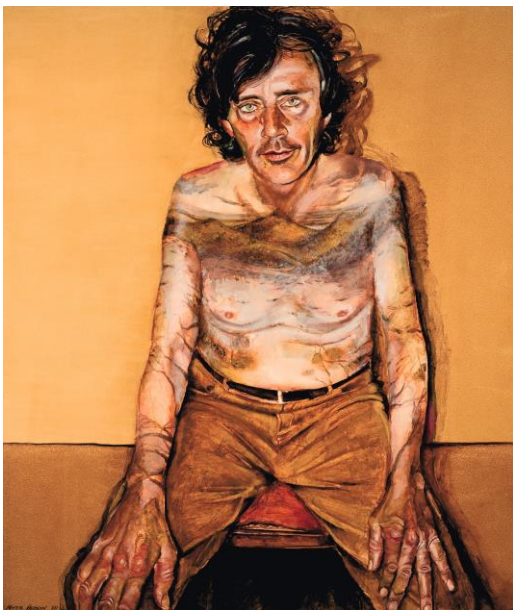
George Bell
Woman in Green with Red Scarf
oil on board



What do you feel when you look at this portrait?

What do you think the woman is thinking about?

Portraits can tell us a lot about a person. Look at this portrait of Shane Howard.



Peter Hudson
Shane Howard and Tower Hill
2009
oil on linen

What can you see in this portrait?

What do you think it tells us about Shane Howard?

The portrait is of Shane Howard – that means he is the **subject** of the painting.

Sometimes a portrait does not look much like the subject. They can be made in many different styles.

They can be **abstract, cubist, surrealist** etc.

Have a go at **looking up** those words in a dictionary or online.



Take a look at this strange portrait. Do you think that Estelle Winwood really looked like this?

This style of painting is called automatic surrealism. It can be described as drawing without thinking. A bit like doodling.

Roy Opie
Old Actress, the Edwardian Estelle Winwood 1951
Oil on board

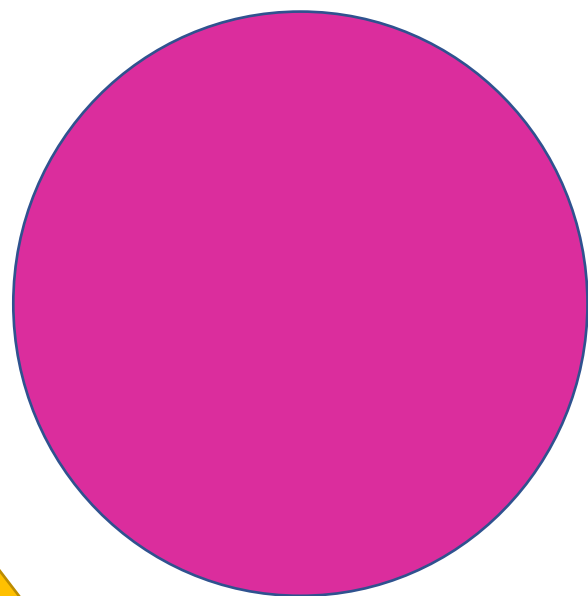
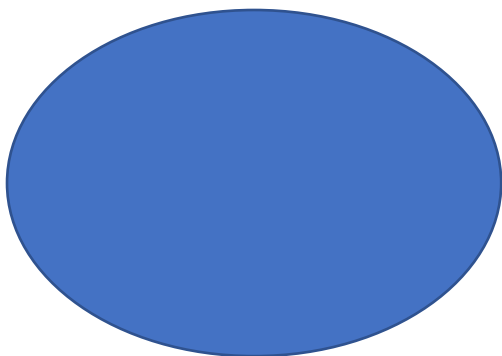
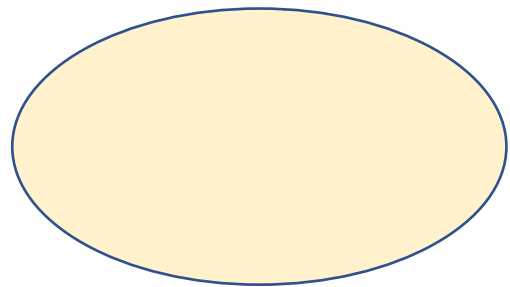
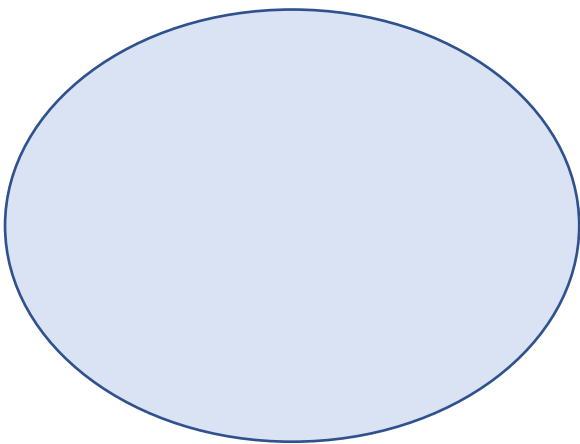
Use the space below to try out doodling. Use lines, shape, scribbles – whatever you like!

A **self-portrait** is a picture of yourself! Draw yourself in the frame. Think about the colours, what you will wear, whether there will be anything in the picture to tell us what you like doing – a paint brush, a football or maybe a musical instrument?



Now it's your turn to make a portrait of someone else. It could be of someone you admire, a superhero you have made-up, a real life superhero like a parent, grandparent, teacher or someone else in the community.

First think about the person. What qualities do they have? Write some words which come to mind in the shapes below. Are they kind, brave, clever? You could also add physical characteristics here too – hair colour, tall, short.



Your portrait

Name of the subject _____

Why did you choose them? _____

Artist (your) name _____